



**HENDERSON
CONNELLAN**
ESTATE AGENTS

Brooksdale Close, Kettering NN16

“Extended Family Living”

🛏️ 4 🚿 2 🚺 2



"Extended Family Living"

This impressive, extended detached family home enjoys a generous plot situated on this most desirable cul de sac to the North End of Kettering. The versatile interior includes an entrance hall, living room with minster style fireplace flowing to the dining room and a versatile study/snug. The stylish kitchen is a great size with separate utility room and guest cloakroom. Upstairs there is a family bathroom and four double bedrooms, the principle with en- suite shower room. Gas central heating and UPVC double glazed windows complete the inside. Outside, a private driveway offers parking for two to three and the rear garden is a great size with artificial lawn for easy care. The town centre, schools and a wealth of amenities are within easy reach. An exceptional home!

Living/Dining Room - 72.75m x 2.84m (23'8" x 12'6")

Kitchen - 4.39m x 3.07m (14'6" x 10'1")

Utility Room - 2.01m x 1.27m (6'7" x 4'2")

Study - 2.87m x 2.29m (9'5" x 7'6")

Guest WC - 2.87m x 0.91m (9'5" x 3'0")

Bedroom One - 4.7m x 3.84m (15'5" x 12'7")

Ensuite - 2.34m x 1.12m (7'8" x 3'8")

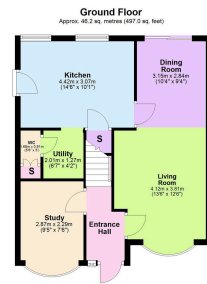
Bedroom Two - 3.53m x 2.57m (11'7" x 8'5")

Bedroom Three - 2.87m x 2.87m (9'5" x 9'5")

Bedroom Four - 2.74m x 2.34m (9'0" x 7'8")

Bathroom - 1.83m x 1.75m (6'0" x 5'9")





Total area: approx. 99.7 sq. metres (1072.7 sq. feet)

- Detached
- Guest Cloakroom
- Ensuite and Family Bathroom
- EPC RATING: PENDING
- Four Double Bedrooms
- Utility Room
- Parking for Two/Three Cars
- COUNCIL TAX: C



15-16 Market Place, Kettering,
Northamptonshire, NN16 0AJ

Disclaimer: These particulars do not form part of any offer or contract and should not be relied upon as statements or representations of fact. Any areas, measurements of distances are approximate. The text, photographs and plans are for guidance only and are not necessarily comprehensive.

